

MATERIALS AND FINISHES

Materials

Aluminum

G. Aluminum 6063 T6

Mild Steel - Plain

A. Hot Rolled Steel Plates, Sheets and Coils S235 JR

as per:

EN 10025 -2 / DIN 17100 / BS 4360 / ASTM A 653M / ASTM A 1011 / ASTM A 1011-01a

JIS 3101 / JIS 3106 / GB 700 / GB / T1591.

ASTM A 907 / ASTM A 1018M.

ASTM A 570M / ASTM A 572M.

B. Cold Rolled Steel DC 01,

as per:

EN 10130 / DIN 1623, Part 2 / BS 1449:1 / ASTM A366 / ASTM A 1008 / JIS G 3141 / GB 699.

EN 10131 / ASTM A 568M

Mild Steel - Galvanized

C. Continuously Pre- Galvanized Hot-Dip Zinc Coated Steel DX 51D + Z

as per:

EN 10327 / DIN 17162 / BS 2989/ ASTM A 527M / ASTM A 653M / JIS G 3302.

EN 10326/ EN 10142 / ASTM A 526, 527, 528/ ASTM A 146

D. Electro Galvanized Steel (Electrolytic Coating) DC01 + ZE v

as per:

EN 10152 / DIN 17163 / ASTM A591 / JIS G 3313 / JIS G 3141/BS 1449:1

EN 10131

Stainless Steel

F. Austenitic Stainless Steels SS 304 & SS 316,

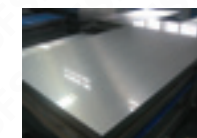
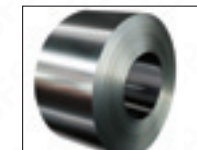
as per:

ASTM A 240 / EN 10088-2/ DIN 17400 / BS 1449:2 /

ASTM A480 / ASTM A666 / ISO 3506 / EN 10028-7 /JIS G 4304

F.1 Stainless Steel Fasteners EN 3506

F.2 Stainless Steel Wire BS 1554 ,ASTM A276



Finishes

1- Hot-DIP Galvanization after Fabrication

as per:

ASTM A 123 / ASTM A 153 / ISO 1461.

BS 729 / DIN 50976

2- Zinc Electroplating after Fabrication

as per:

ASTM B633 / EN 12329 / ISO 4042/ BS 1706 / BS 3382 / DIN 50961

3- Powder Coating

Epoxy / Polyester / Epoxy & Polyester

BS 3900 / ISO 2409 / ISO 1519 / ISO 1520

